



INSTALLATION INSTRUCTIONS FOR SHOWER CEILING PANEL

1. Always install ceiling panel FIRST, before any wall panels.
2. Verify that the shower base or bathtub is properly installed and level. Also verify that moisture-resistant wallboard or cement board has been installed both on the ceiling and on the walls down to the highest point of the water dams.
3. Place the ceiling panel in its intended location WITHOUT any adhesive applied. Mark locations and amounts to be trimmed or scribed, as well as the locations of plumbing, lighting, or other cutouts. Cut openings in the panel as necessary for plumbing, lighting, or other items. Trim/scribe edges of panel so that the resulting gap at the perimeter is not more than 1/8" when installed.
 - a. Use a carbide hole saw to cut smaller holes.
 - b. Use an electric router with a single-flute bit and a jig to cut larger holes or irregular shapes. As an alternate, you may also use a jig saw with an abrasive blade (*look for the package labeled "for ceramics" or "glass and tile"*), but be aware that this method may result in chipping of the edge, which must be sanded smooth prior to proceeding.
 - c. Use a circular saw with a masonry blade or a belt sander with 80-grit sandpaper to trim and scribe the edges of the wall panel.

Please Note: Make all cuts from FINISHED SIDE and be sure to PROTECT THE SURFACE with masking tape.

DO NOT leave square inside corners when adding cutouts to wall panels. ALL inside corners must have a minimum 1/4" radius to avoid the potential for cracks later.

Lightly sand the inside of all cut openings to remove any small chips that may have occurred during the cutting process. The inside of the cutout should be smooth to the touch with no sharp edges.

Unless otherwise specified at the time of order, shower ceiling panels are typically supplied slightly oversized for trimming and scribing at time of installation.

4. Pre-drill holes for mechanical fasteners. Spacing between mechanical fasteners should be no more than 24" in any direction. Suggested layout and spacing for the mechanical fasteners can be found at the end of these instructions. Be sure that your hole locations coincide with the location of structural members in the ceiling framing to ensure a secure installation.

Please Note: All holes for mechanical fasteners must be drilled larger than the fastener. The screw threads cannot be in contact with the ceiling panel as the screw passes through the pre-drilled hole.

5. Once all trimming, scribing, and cutouts have been completed, clean the back of the panel thoroughly with isopropyl alcohol or acetone (*Please check local laws regarding the use of acetone and/or other solvents in your area*). Then, apply a heavy, continuous bead of SoudaSeal® All-Purpose Adhesive around the perimeter of the panel about 1-1/2" in from each edge. Continue to apply adhesive per the manufacturer's instructions in quarter-size drops no more than 12" apart throughout the remainder of the panel.

04.14.2017

Page 1 of 2

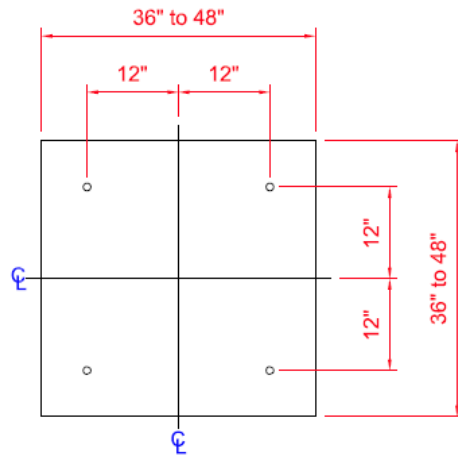
P: 330.837.2216
F: 330.837.2642

2101 Ninth Street S.W.
Massillon, OH 44647

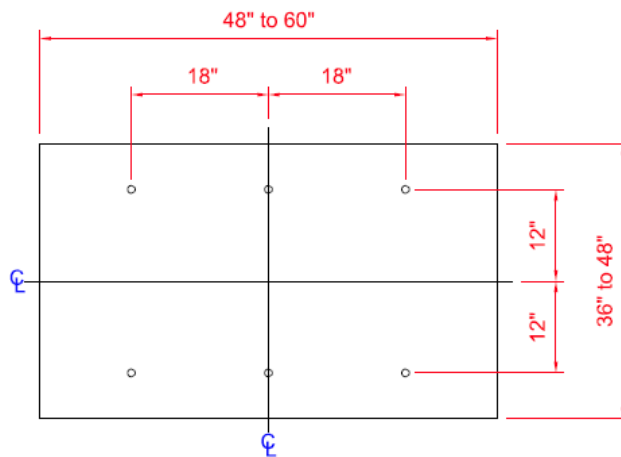
- Install the ceiling panel and all mechanical fasteners. Plastic screw head caps are typically used at the time of installation to conceal the screw head and can be purchased at any local hardware store or home center.

Please Note: Wood braces may be used to hold the ceiling panel in place while the adhesive cures. Cut wood braces to wedge between the floor and the ceiling panel, being sure to protect the face of the panel with padding or towels.

- Proceed with installation of wall panels as outlined in Tower Industries' Installation Instructions for Shower Wall Panels.



Celling Panel
Mechanical Fastener Hole Pattern



Celling Panel
Mechanical Fastener Hole Pattern

All installation instructions are provided as a recommendation only and are not intended for design purposes. Tower Industries makes no representations or warranties of any kind concerning these instructions. Tower Industries strongly recommends that the installer test the installation materials and methods in the anticipated service conditions to determine suitability. Due to variances in adhesives, installation skill, and jobsite conditions, Tower Industries cannot accept liability for the results obtained.

04.14.2017

Page 2 of 2

P: 330.837.2216
F: 330.837.2642

2101 Ninth Street S.W.
Massillon, OH 44647